

PUBLIC CONSULTATION CLAYDON SOLAR FARM



Pegasus Group, on behalf of JBM Solar Projects, is consulting with the local community on proposals for a new solar farm on land at Claydon Farm, east of Fiddington, Gloucestershire.

Whilst we would usually hold an event locally so that the local community are able to view the proposals and ask questions to members of the development team, unfortunately this is not currently possible given the current situation and may not be possible for some time. As a result, we will instead host a website based forum with the hope a local drop in event will be possible in the near future.

JBM Solar is committed to remaining open and engaged with the community during this process. In light of the unusual circumstances, we're offering anyone who would like to discuss the project the chance to have a one-on-one discussion with our development team, either by phone or via video conferencing. Please use the form on the website to get in touch if you'd like to arrange this.

A website has been set up to share the initial plans that would have been on show at the public exhibition event. The details of the proposed development can be accessed at: **www.claydonsolarfarm.co.uk**

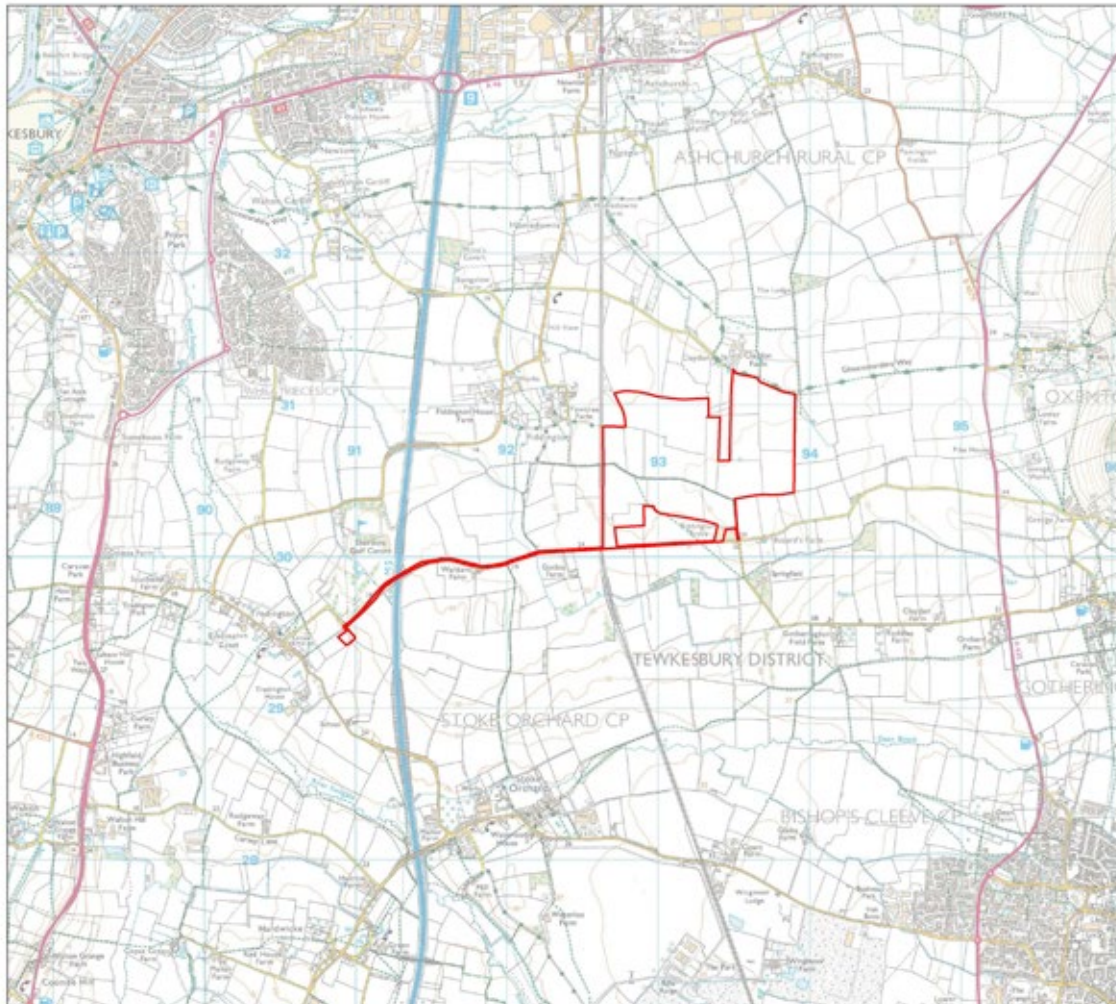
Comments provided by the local community will be taken into account in shaping the final planning application submission. Please provide any comments you have on the proposal by email or via the feedback form on the website.

Website: www.claydonsolarfarm.co.uk

Email Address: claydonsolarfarm@pegasusgroup.co.uk

All comments should be provided by 5pm on 18th September 2020





KEY
[Red outline] Site Boundary

SITE LOCATION PLAN